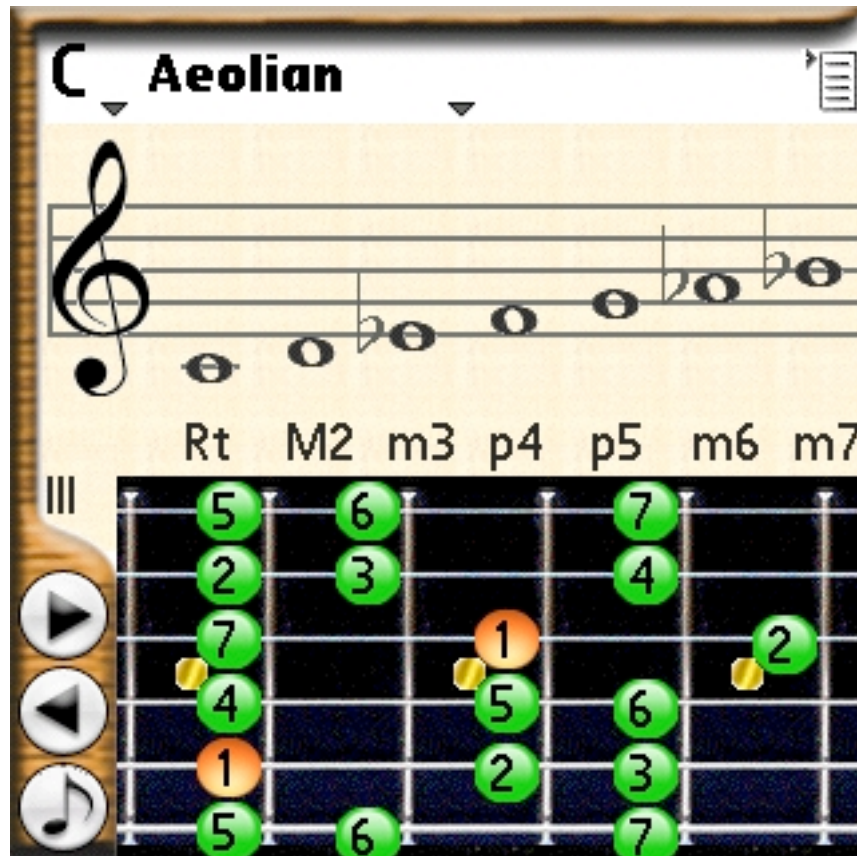




Welcome to ScaleMaster



Contact: tech and other support:
Our website:
Support site:

support@rogame.com
<http://www.rogame.com>
<http://support.rogame.com>

Copyright © 2007 RoGame Software

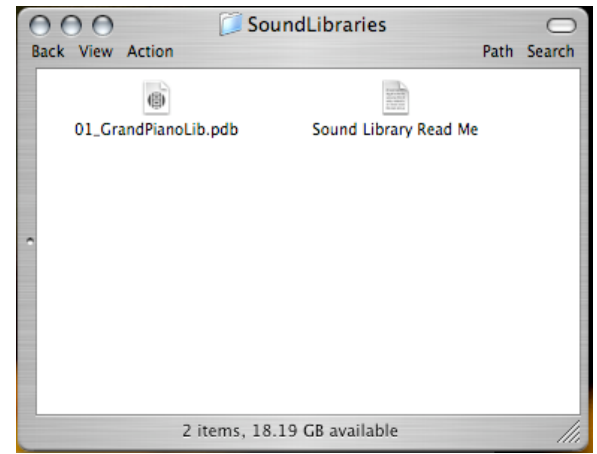
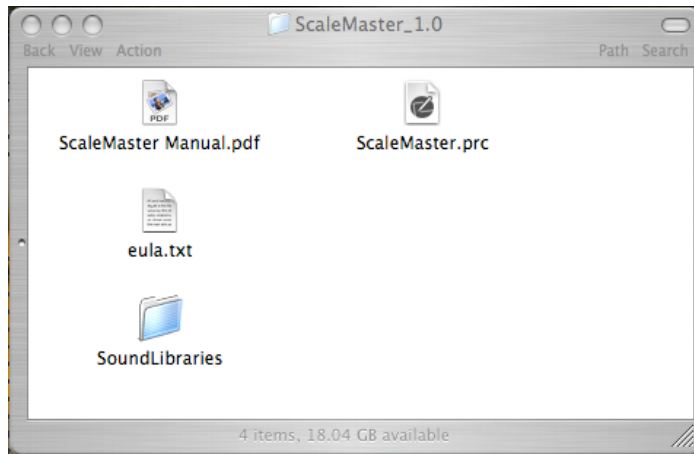
Intro

Scales are elementary to all musicianship. They provide flavor and harmonic structure, but are at the same time fairly complex. ScaleMaster is designed to help in several key areas concerning scales. It lists over 100 scale types in all keys and shows them in music notation. There are four different clefs available (treble, bass, alto and tenor). Additionally scale degrees are shown qualified by the interval to the root. To help visualization there are four virtual instruments (bass, guitar, mandolin and piano). These virtual instruments feature overlays that can show scale degrees or position of a note in the current scale and can be shifted to all available positions. Any scale can be sounded out using RoGame's Sound Libraries (Palm OS 5.0 and higher only) or the built-in synthesizer.

Designed for the beginning musician as well as the professional, ScaleMaster is an excellent tool towards advancement in theory and scales in particular, making it easy to look up a scale in seconds, getting a taste of the flavor of a particular scale by listening to it, or finding out how to play it on one's instrument.

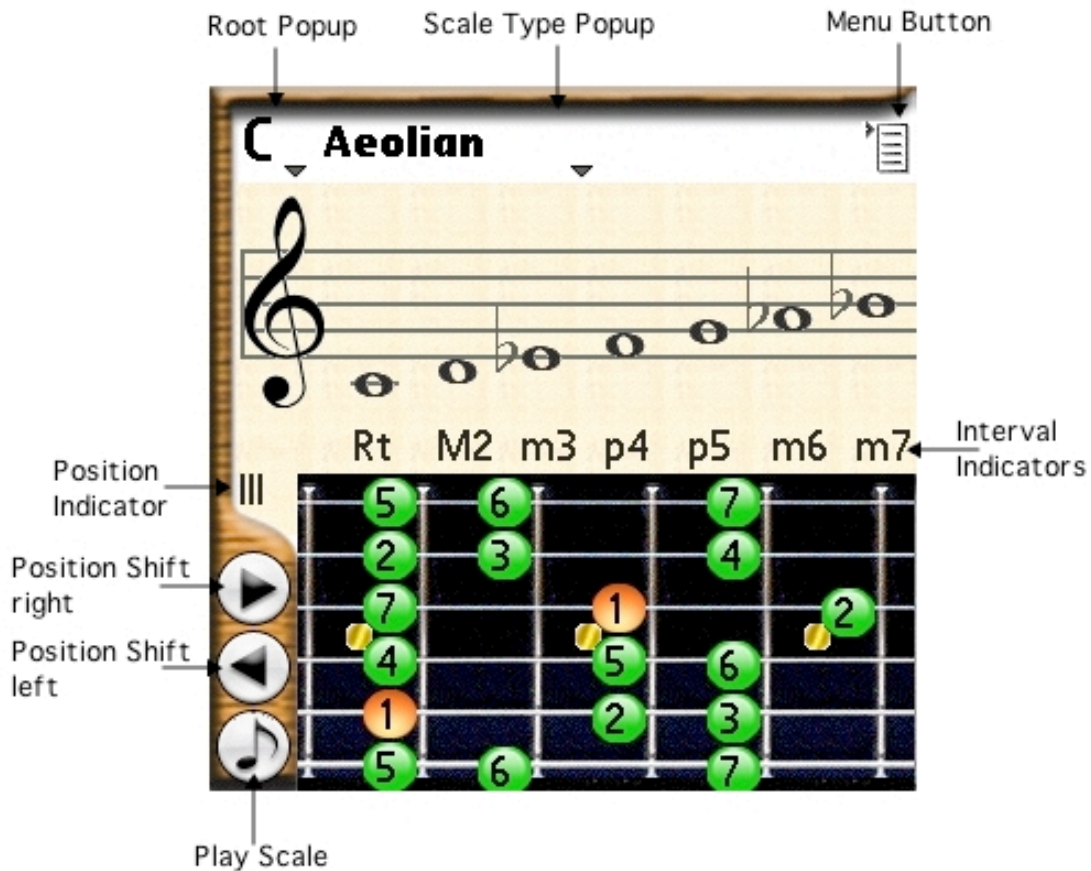
Please read on for a more detailed description and explanation of the interface.

Installation



To run ScaleMaster on your handheld you must install the file ScaleMaster.prc from the main folder (top left). To use the Grand Piano sound library (for playback) also install the file 01_GrandPianoLib.pdb from the folder SoundLibraries (top right). Additional sound libraries are available from our website.

Basic Operation



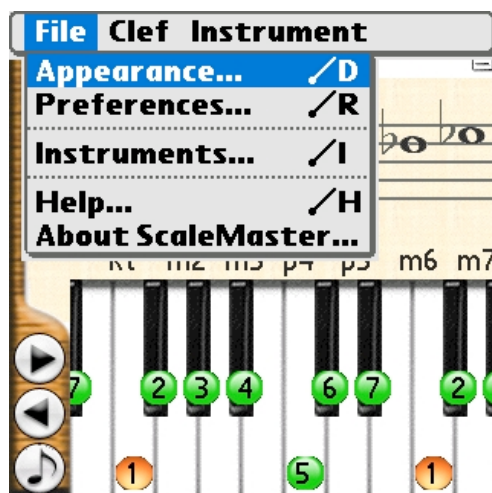
There are only six controls on ScaleMaster's primary interface. Three of them are located at the very top of the screen, the root popup, scale type popup and menu button. These are fairly self-explanatory. To change the root or type of the current scale just tap inside the popups to display the entire list. The menu button will display the regular Palm menu when tapped. More about that later. Please note that you can assign the up and down arrow keys on your handheld to scroll the Root or Scale Type menus. Go to Preferences to make a selection.

Another set of three controls is located at the left bottom part of the screen. These are simple buttons that allow to shift the position of the current instrument to the left or right if applicable and also to play the current scale. If your handheld has a 5-button pad, you can use the left or right arrow keys to shift an instrument's position as well.

The virtual instruments in ScaleMaster are fully functional and can be used to play back pitches by tapping on a key or fret.

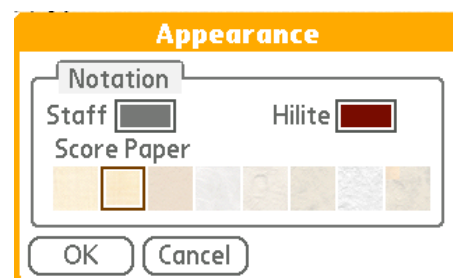
Menus are available by tapping the menu button in the top right corner of the screen or by using the menu button on your device.

The File Menu



Appearance

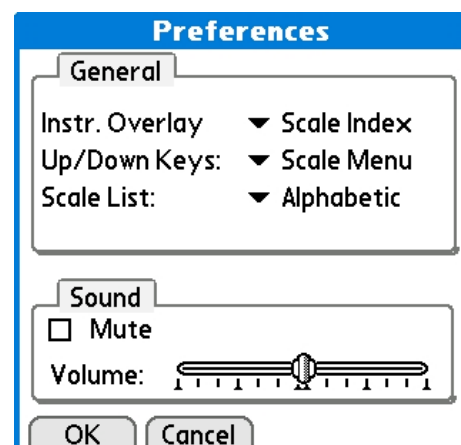
This dialog affects the look of the notation display and also the hilite color for the virtual instruments.



Preferences

While the sound options at the bottom of this screen are fairly self-explanatory, the general options need some explanation. *Instrument Overlays* are the green and orange circles as seen above. The popup menu allows three options:

- Nothing (don't display these indicators at all)
- Scale Index (i.e. 1, 2, 3 for number of note in a scale)
- Interval (i.e. Rt, p4, m5 and so forth)



Up/Down Keys lets you pick which menu is driven by these hard keys on your handheld. Pick either the Root Menu or the Scale Menu. The default is Scale Menu.

Scale List is a bit of an advanced option. Your choices here are Alphabetic or compact. Alphabetic is the default and should be used in most cases. The compact setting addresses the fact that some scales are known under sometimes many different names. Each type is only listed once here thus allowing a quick scroll through the Scale Menu while looking up a specific construction (i.e. Rt M2 M3 p4 p5 M6 M7 for the major scale). In Compact Mode the Scale Menu is organized like this:

- chromatic scale (dodecatonic scale)
- octatonic scales
- heptatonic scales
- hexatonic scales
- pentatonic scales

Furthermore the heptatonic scale group is subdivided into:

- Major modes (i.e. Ionian, dorian, ...)
- Melodic Minor modes (i.e. Dorian b2, Lydian Augmented)
- Harmonic Minor modes (i.e. Locrian #6, Ionian Augmented)
- Exotic heptatonic scales

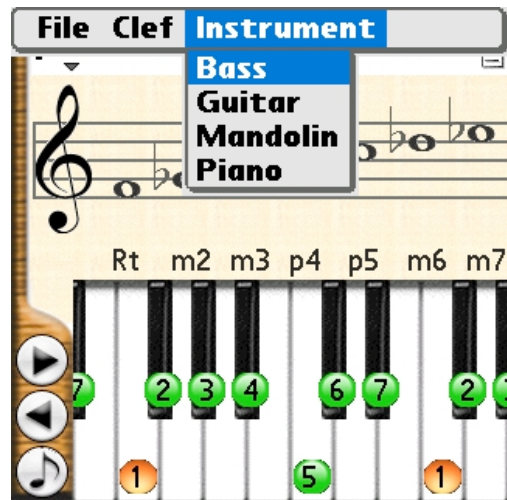
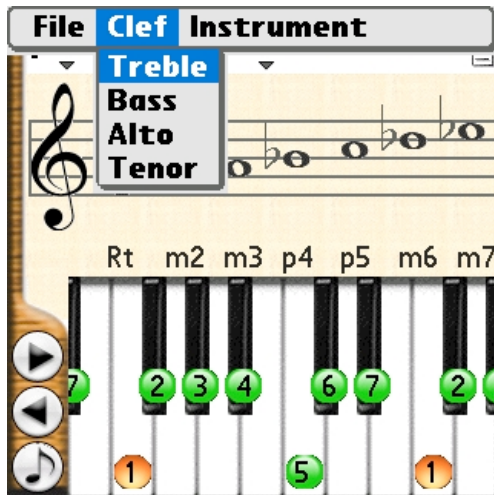
Other than the Major, Melodic and Harmonic minor modes which go in sequence, all subgroups are ordered alphabetically. Again, this is an advanced option and possibly not suitable to beginning students.

Instruments

This dialog is available from the File menu on devices with Palm OS 5.0 and higher. The 01_GrandPiano library is included in ScaleMaster's distribution and can be installed in RAM or on memory cards. If Built-In is selected, the internal soft synth will be used for playback. Additional sound libraries are available from our website.



The Clef and Instrument Menus



These menus don't need much explanation. Please note, however, that ScaleMaster's virtual instruments can be used to play back all notes in the display.

Concluding

We hope you enjoy this program and find it useful. If you have suggestions or find anything wrong you can always email us.

support@rogame.com
www.rogame.com
© 2007 RoGame Software

Contact: tech and other support:
Our website:
Support site:

support@rogame.com
<http://www.rogame.com>
<http://support.rogame.com>

Copyright © 2007 RoGame Software